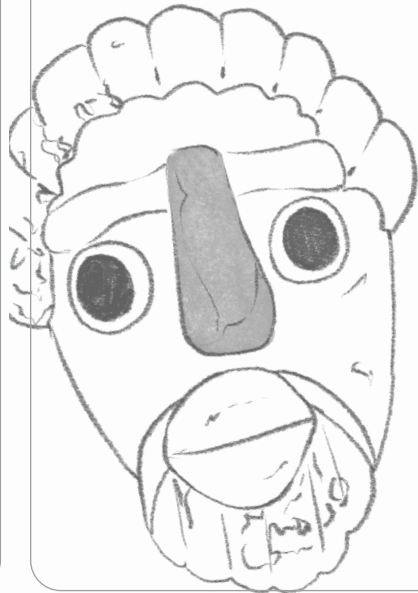


Starting clue 3



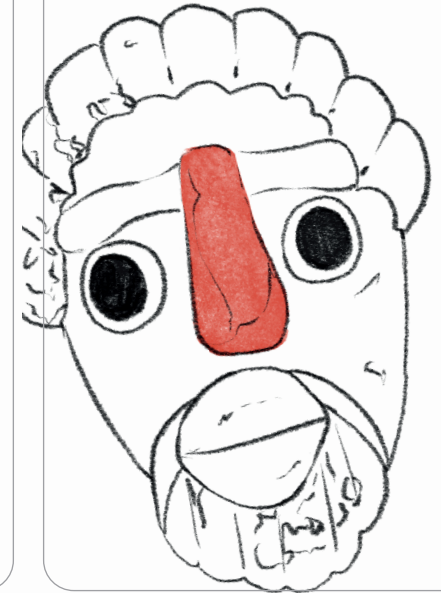
Starting clue 2



Starting clue 1



The pearl

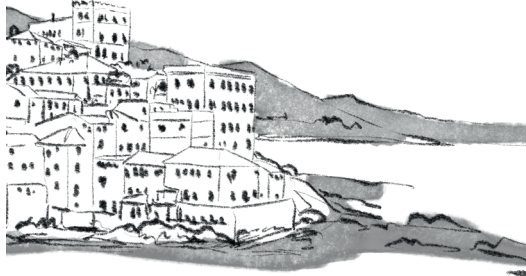


Case 4

The pearl

A face bead is offered for sale in a popular online auction house.

An attentive archaeologist acquires the piece from the user "Karthago".



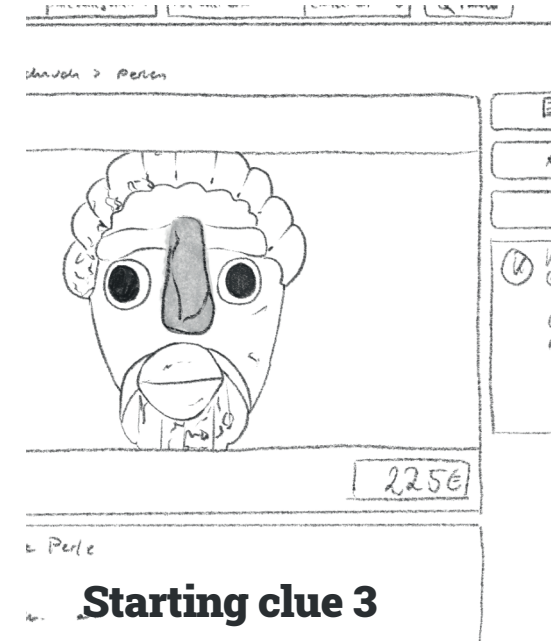
Starting clue 1

The ad indicates Genoa as the place of origin.



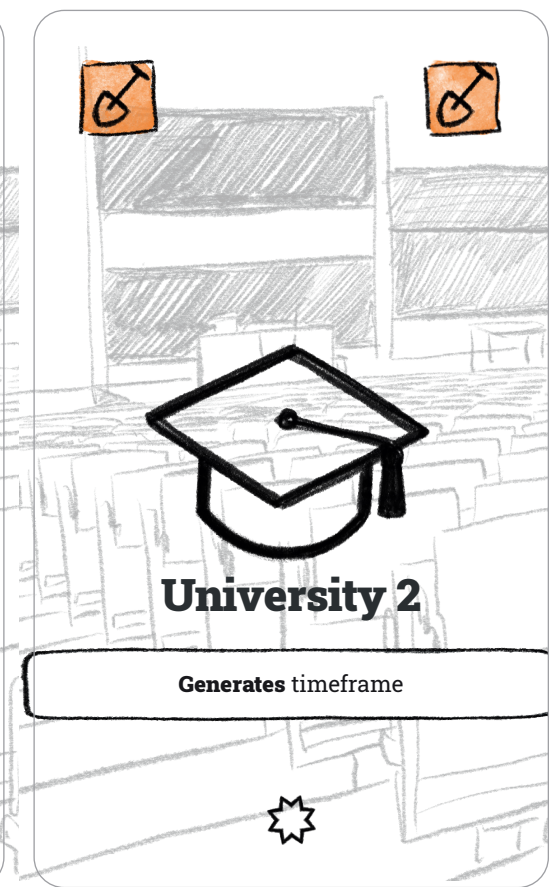
Starting clue 2

The object is said to date from the 3rd century AD.



Starting clue 3

The object is for sale for 225 euros.





University 1

The object is a face bead that was once made in the Phoenician Empire.



University 2

Phoenician face beads were made from 600 to 500 BC.

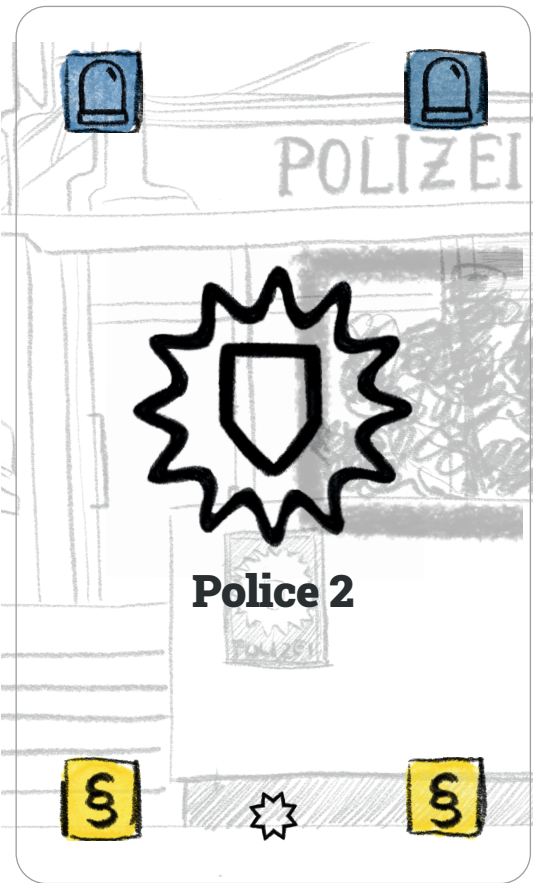


University 3

The pearl has a drilled hole – which is unusual.

Archive 1

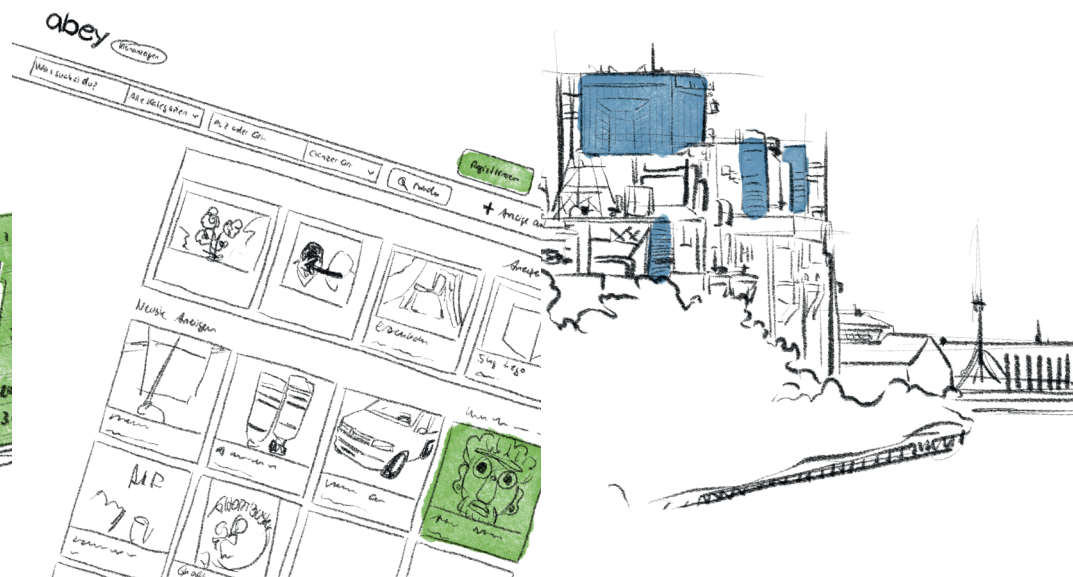
The sales platform states that the ad went live on May 20, 2021 at 16:38.





Archive 2

In a review of auction catalogs from last year, comparable pieces are on sale for 2,000 to 3,000 euros.



Archive 3

There was previously an ad with exactly the same photos on the platform. The ad offered the object as a "replica from Indonesia" at a significantly lower price.

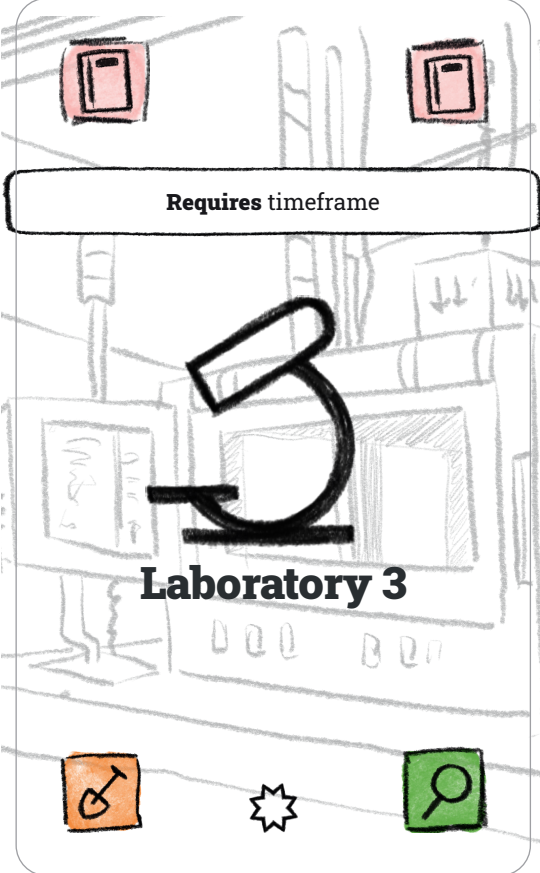
Police 1

The IP address of the user leads to a retirement home in Rüsselsheim.



Police 2

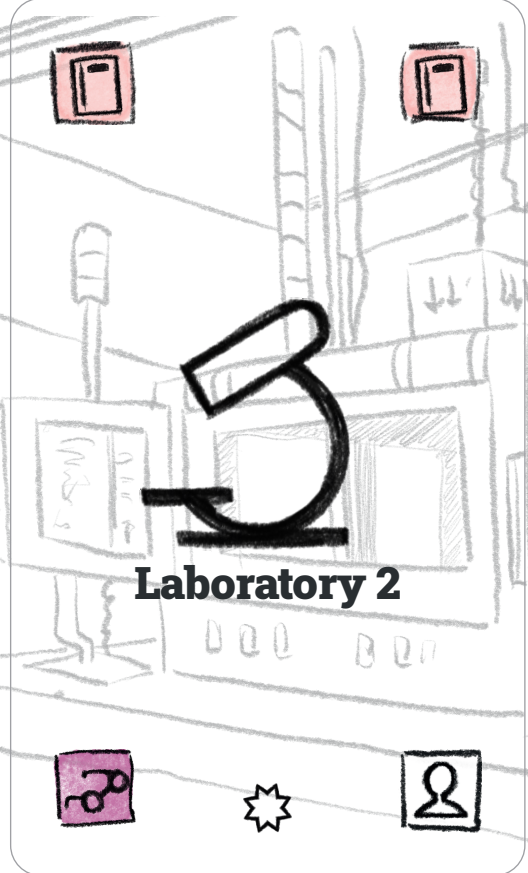
The payment service provider of the sales platform releases the user's bank details.



Requires timeframe

Laboratory 3

Icons: Two pink door icons at the top; an orange icon with a symbol, a star, and a green magnifying glass icon at the bottom.



Laboratory 2

Icons: Two pink door icons at the top; a pink icon with a symbol, a star, and a person icon at the bottom.



Laboratory 1

Icons: Two purple eye icons at the top; a person icon, a star, and another person icon at the bottom.



POLIZEI

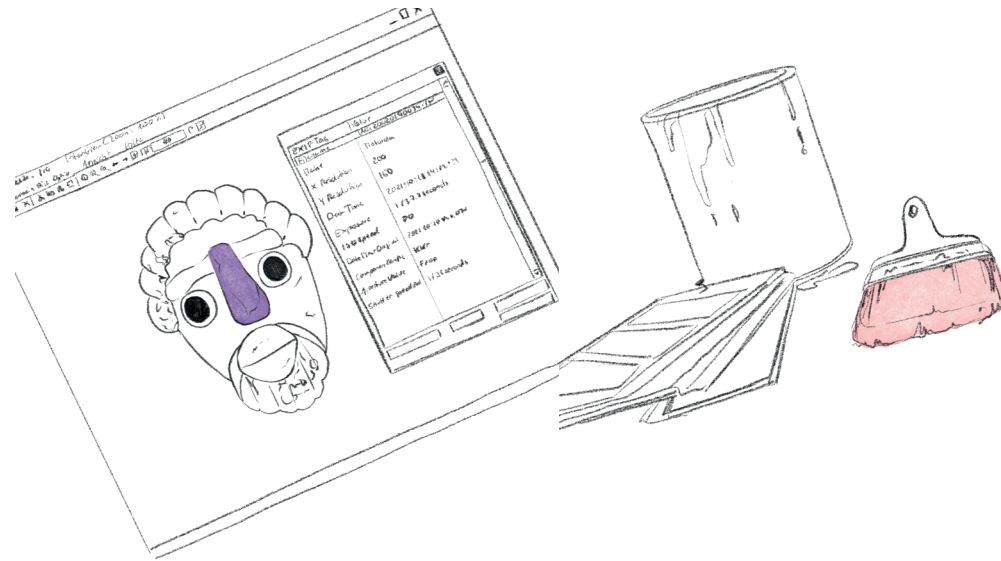
Police 3

Icons: A yellow icon with a symbol and a green magnifying glass icon at the top; a blue door icon, a star, and another blue door icon at the bottom.



Police 3

The bank releases the name of the account holder on request: Mr. Martin Hardenberg.



Laboratory 1

The JPG of the original images contains GPS data:

49.997336631572765, 8.40043807153001

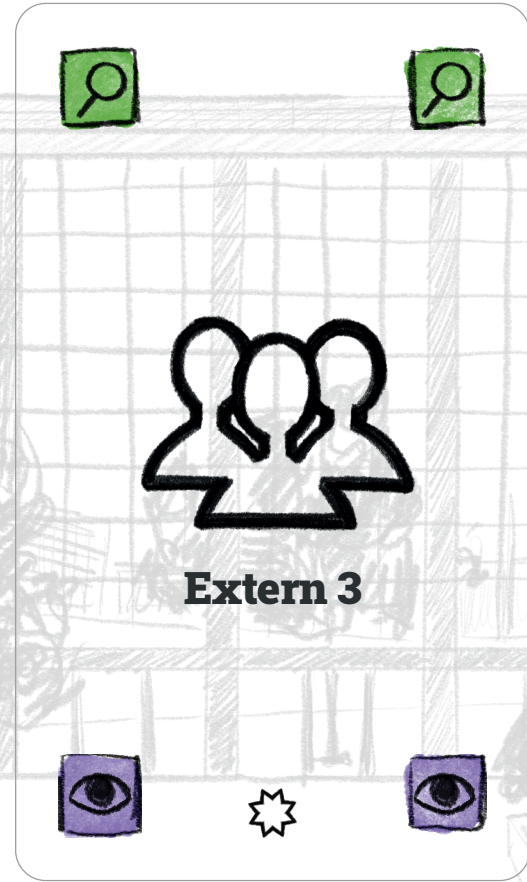
Laboratory 2

The object is glazed with a varnish based on cellulose nitrate.

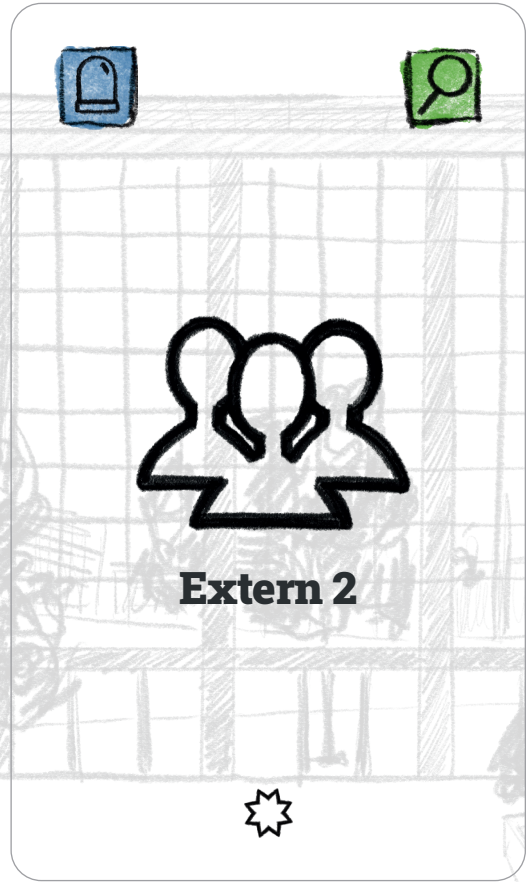


Laboratory 3

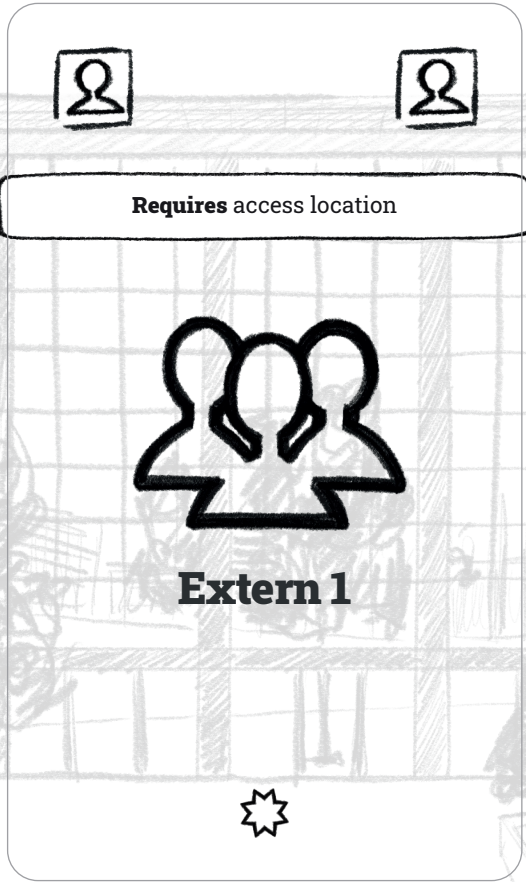
The glass was colored with cobalt (II) oxide. It does not contain arsenic – this was not possible in ancient times.



Card for Extern 3. Top bar contains two green magnifying glass icons. Center features a group of three people icon and the text "Extern 3". Bottom bar contains two purple eye icons and a star icon.



Card for Extern 2. Top bar contains a blue padlock icon and a green magnifying glass icon. Center features a group of three people icon and the text "Extern 2". Bottom bar contains a star icon.



Card for Extern 1. Top bar contains two person icons. A white box with a black border at the top contains the text "Requires access location". Center features a group of three people icon and the text "Extern 1". Bottom bar contains a star icon.



Extern 1

Prof. Hardenberg's grandson is the only one who visits every Thursday.



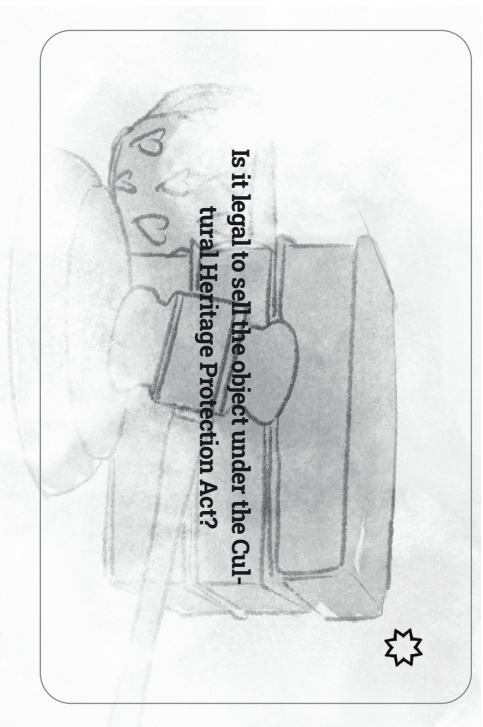
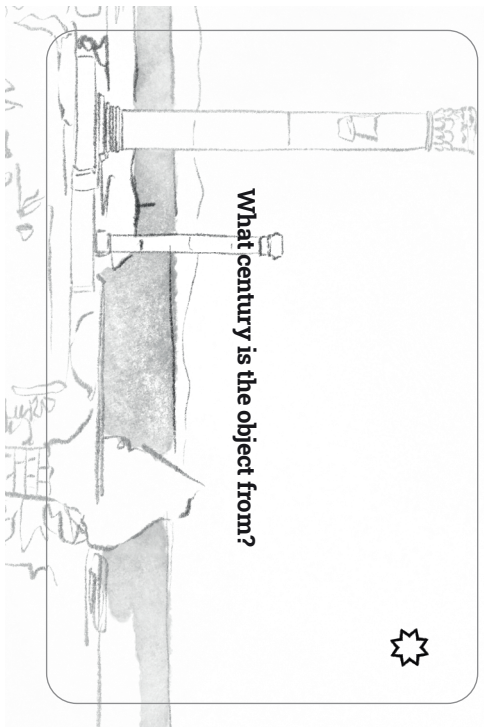
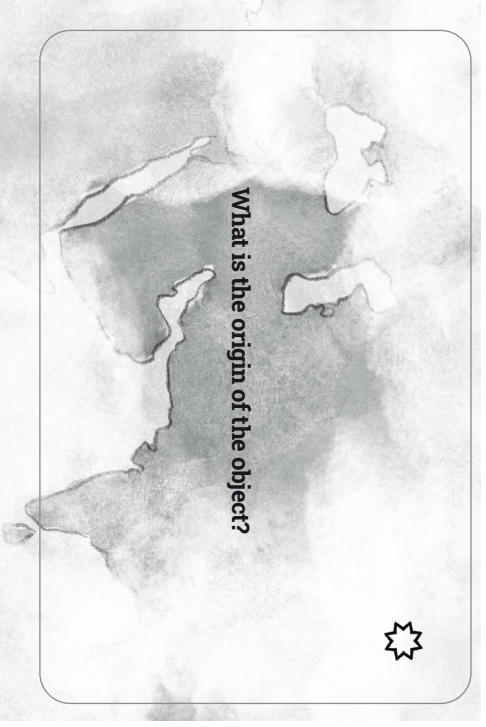
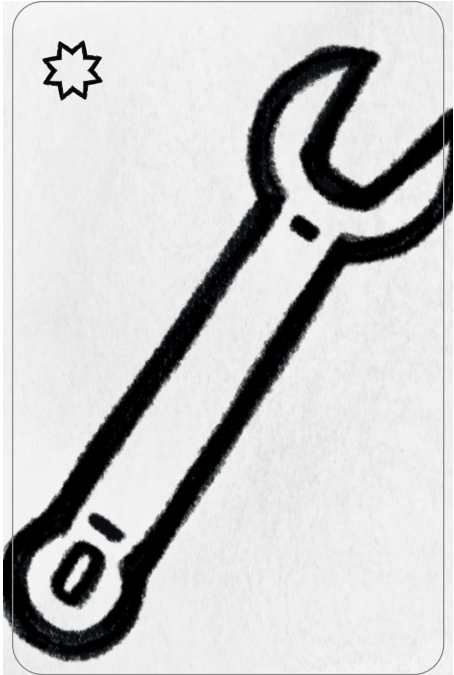
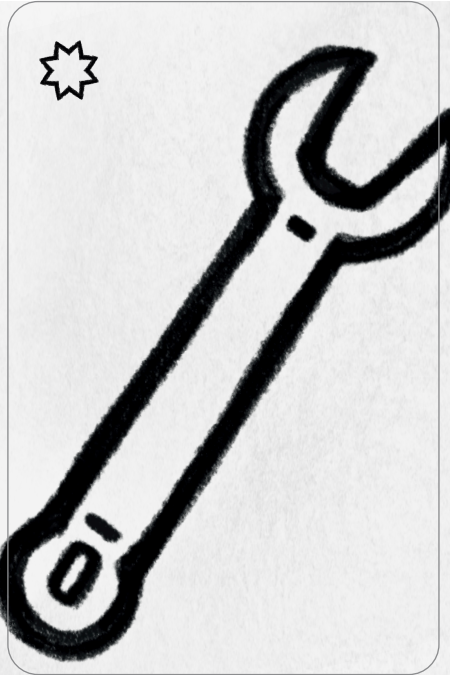
Extern 2

In the pictures on the flyer for the residence, almost all the old ladies are wearing Phoenician pearl necklaces.



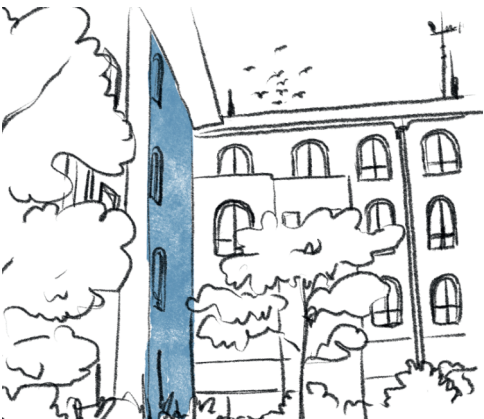
Extern 3

On an Asian manufacturer's site for handmade products, there are products for sale from a manufacturer in Bandung. Glass face beads of the same type as the object are made there.



Access location

With the IP address, the date and the time, the place from which the ad was submitted can be identified.



Timeframe

A rough classification of the age of the pearl based on its external characteristics.



poprset utvixwv znyosbpxe vny =wxyz #ABCD EFGH IJKL MNOP
RqRsh i p l y m n o p q r s t u v w x y z 9ABC DEF GHI JKL MNOP
qerfghijklzmgp oqrs /pqr*xyz#ABCD EFGH IJKL MNOP
I J K L M N O P Q R S T U V W X Y Z 9 A B C D E F G H I J K L M N O P
W X Y Z 0 1 2 3 4 5 6 7 8 9 A B C D E F G H I J K L M N O P Q R S T U V W X Y Z
M X O P Q R S T U V W X Y Z A B C D E F G H I J K L M N O P Q R S T U V W X Y Z
R S T U V W X Y Z A B C D E F G H I J K L M N O P Q R S T U V W X Y Z
T U V W X Y Z A B C D E F G H I J K L M N O P Q R S T U V W X Y Z
U V W X Y Z A B C D E F G H I J K L M N O P Q R S T U V W X Y Z
V W X Y Z A B C D E F G H I J K L M N O P Q R S T U V W X Y Z
W X Y Z A B C D E F G H I J K L M N O P Q R S T U V W X Y Z
X Y Z A B C D E F G H I J K L M N O P Q R S T U V W X Y Z
Y Z A B C D E F G H I J K L M N O P Q R S T U V W X Y Z
Z A B C D E F G H I J K L M N O P Q R S T U V W X Y Z
A B C D E F G H I J K L M N O P Q R S T U V W X Y Z
B C D E F G H I J K L M N O P Q R S T U V W X Y Z
C D E F G H I J K L M N O P Q R S T U V W X Y Z
D E F G H I J K L M N O P Q R S T U V W X Y Z
E F G H I J K L M N O P Q R S T U V W X Y Z
F G H I J K L M N O P Q R S T U V W X Y Z
G H I J K L M N O P Q R S T U V W X Y Z
H I J K L M N O P Q R S T U V W X Y Z
I J K L M N O P Q R S T U V W X Y Z
J K L M N O P Q R S T U V W X Y Z
K L M N O P Q R S T U V W X Y Z
L M N O P Q R S T U V W X Y Z
M N O P Q R S T U V W X Y Z
N O P Q R S T U V W X Y Z
O P Q R S T U V W X Y Z
P Q R S T U V W X Y Z
Q R S T U V W X Y Z
R S T U V W X Y Z
S T U V W X Y Z
T U V W X Y Z
U V W X Y Z
V W X Y Z
W X Y Z
X Y Z
Y Z
Z

poprset utvixwv znyosbpxe vny =wxyz #ABCD EFGH IJKL MNOP
RqRsh i p l y m n o p q r s t u v w x y z 9ABC DEF GHI JKL MNOP
qerfghijklzmgp oqrs /pqr*xyz#ABCD EFGH IJKL MNOP
I J K L M N O P Q R S T U V W X Y Z 9 A B C D E F G H I J K L M N O P
W X Y Z 0 1 2 3 4 5 6 7 8 9 A B C D E F G H I J K L M N O P Q R S T U V W X Y Z
M X O P Q R S T U V W X Y Z A B C D E F G H I J K L M N O P Q R S T U V W X Y Z
R S T U V W X Y Z A B C D E F G H I J K L M N O P Q R S T U V W X Y Z
T U V W X Y Z A B C D E F G H I J K L M N O P Q R S T U V W X Y Z
U V W X Y Z A B C D E F G H I J K L M N O P Q R S T U V W X Y Z
V W X Y Z A B C D E F G H I J K L M N O P Q R S T U V W X Y Z
W X Y Z A B C D E F G H I J K L M N O P Q R S T U V W X Y Z
X Y Z A B C D E F G H I J K L M N O P Q R S T U V W X Y Z
Y Z A B C D E F G H I J K L M N O P Q R S T U V W X Y Z
Z A B C D E F G H I J K L M N O P Q R S T U V W X Y Z
A B C D E F G H I J K L M N O P Q R S T U V W X Y Z
B C D E F G H I J K L M N O P Q R S T U V W X Y Z
C D E F G H I J K L M N O P Q R S T U V W X Y Z
D E F G H I J K L M N O P Q R S T U V W X Y Z
E F G H I J K L M N O P Q R S T U V W X Y Z
F G H I J K L M N O P Q R S T U V W X Y Z
G H I J K L M N O P Q R S T U V W X Y Z
H I J K L M N O P Q R S T U V W X Y Z
I J K L M N O P Q R S T U V W X Y Z
J K L M N O P Q R S T U V W X Y Z
K L M N O P Q R S T U V W X Y Z
L M N O P Q R S T U V W X Y Z
M N O P Q R S T U V W X Y Z
N O P Q R S T U V W X Y Z
O P Q R S T U V W X Y Z
P Q R S T U V W X Y Z
Q R S T U V W X Y Z
R S T U V W X Y Z
S T U V W X Y Z
T U V W X Y Z
U V W X Y Z
V W X Y Z
W X Y Z
X Y Z
Y Z
Z

[Benjamin Indonesia](#)